

OTHER SERVICES PROVIDED

Sexuality and Reproductive Health Care : Counselling and Bookings: Monday & Wednesday 07:00 -12:00

Social Worker : Monday to Friday from 07:30 - 16:00

Clinical Psychology : Monday to Friday from 07:30 – 16:00

DISTRIBUTION OF BEDS : 268

Gynae Ward	36
Antenatal Ward	29
Labour Ward	24
Post Natal Ward	86
Intensive Care	3
Nursery: (90)	ICU - 16
	Incubators - 24
	High Care Unit - 11
	Special Care - 15
	Isolation - 4
	Kangaroo Care - 20

There are also 40 beds in the mothers lodge

PROJECTS

- BFHI – Baby Friendly Hospital Initiative
- Revitalization Project
- Kangaroo Mother Care (KMC)

CONTACT DETAILS

29 Union Street - Private Bag X20005 - Empangeni - 3880
Hospital CEO : 0359077001
e-mail address: cebo.myeza@kznhealth.gov.za
www.kznhealth.gov.za/ludwmhospital.htm



HEALTH
KwaZulu-Natal

LOWER UMFOLOZI DISTRICT WAR MEMORIAL
HOSPITAL - EMPANGENI

INFORMATION BROCHURE

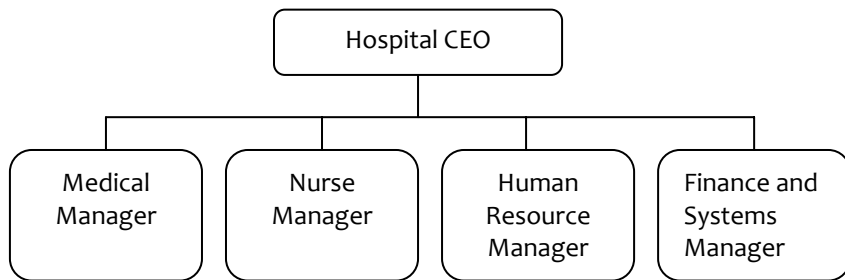


Tel: 0359077000

Fax: 0357922596

<http://www.kznhealth.gov.za/luwmhospital.htm>

HOSPITAL MANAGEMENT



VISION

To promote and sustain quality health care to both women and child towards building a healthy nation.

MISSION

Dedicated to the highest quality of customer services delivered warmly and friendly by teams empowered to meet the challenges of women and child health in the districts of uThungulu, uMkhanyakude and Zululand.

CORE VALUES

RESPECT

We will make clients, visitors and staff feel special.

INTEGRITY

We will develop a culture of loyalty, honesty, punctuality and trustworthiness.

DISCIPLINE

True discipline comes from within which enable us to give of our best at all times.

KNOWLEDGE

We will keep updated with the latest developments and share this with everybody so that we grow together.

INNOVATION

We must continuously strive for new and better means of doing things that will improve service delivery.

TEAMS

Promote meaningful and effective teamwork.

COMMITMENT TO SERVICE

We will keep clients informed in an honest, open and consistent manner and we will conduct our business in an ethical way that will promote the “MOTTO” of the Department of Health.

PARTICIPATIVE DECISION MAKING

All key stakeholders will be capacitated and empowered to contribute in decision-making.

SERVICES PROVIDED

Comprehensive 24-hour Gynaecological,
Maternal and Neonatal



CLINICS AND CLINIC HOURS

Gynae Out Patient Clinic : Monday to Friday 08:00 -16:00

Gynae Specialist : Mon, Tuesday & Wednesday 07:00 -16:00

High Risk Ante-natal Clinic : Monday to Friday 07:00 -12:00

PMTCT/ARV Clinic : Monday to Friday 07:30 – 16:00