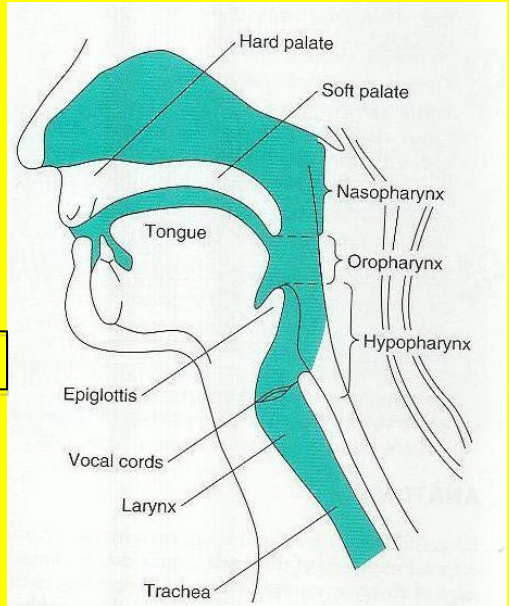
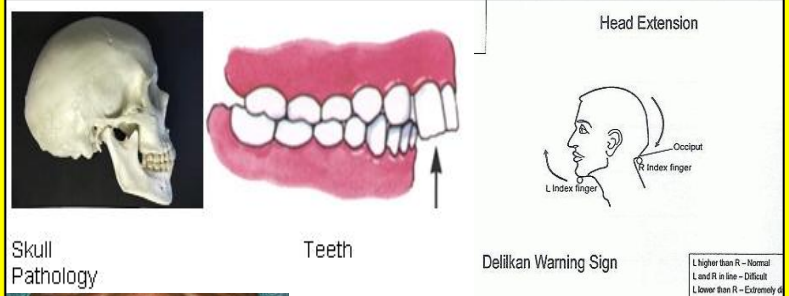
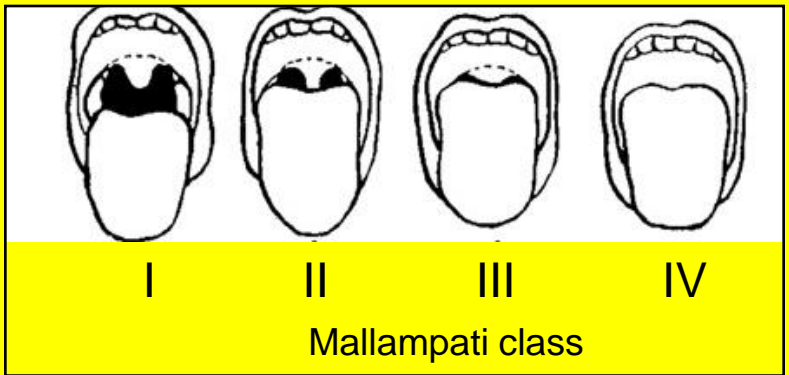


### Look, Listen and Feel!!!

1. **Mouth opening** >2cm, 3 finger breadths
2. **Teeth** missing, buck teeth
3. **Tongue** large, swollen, bitten
4. **Mallampati class** <3
5. **Thyro Mental Distance (TMD)** > 6cm
6. **Mandibular protrusion**, can she bite her upper lip?
7. **Obstruction**: stridor, airway masses?
8. **Neck mobility** (Lift chin higher than occiput)
9. **Obesity** (BMI <40, Neck circumference <50cm)
10. **Big Breasts**



Airway Anatomy

