

# ANTHRAX

## WHAT IS ANTHRAX?

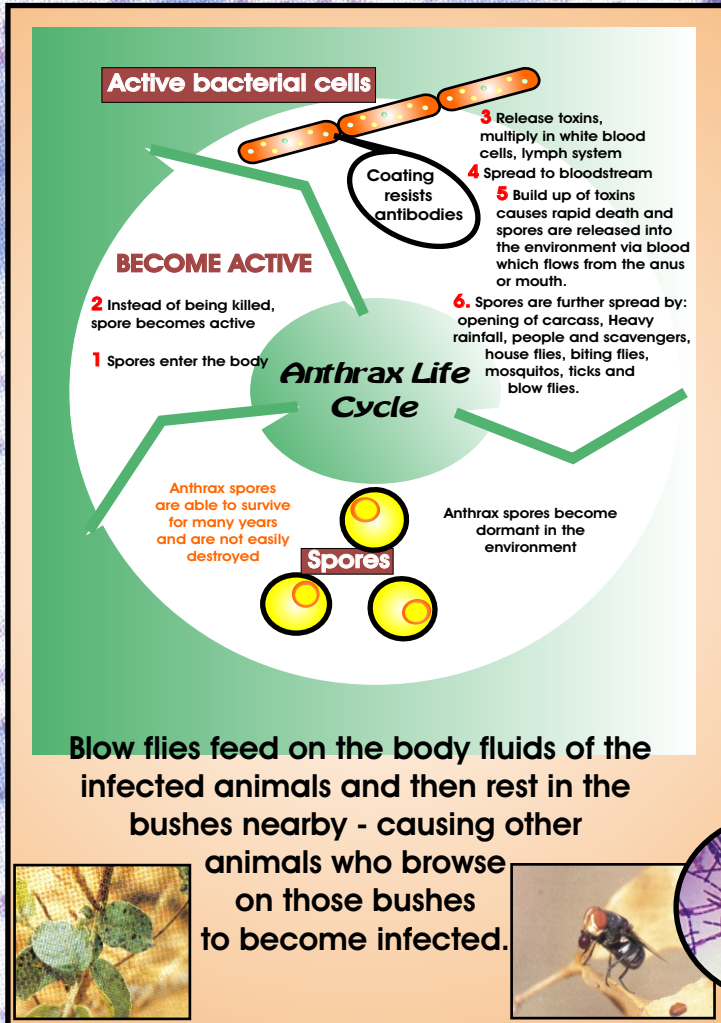
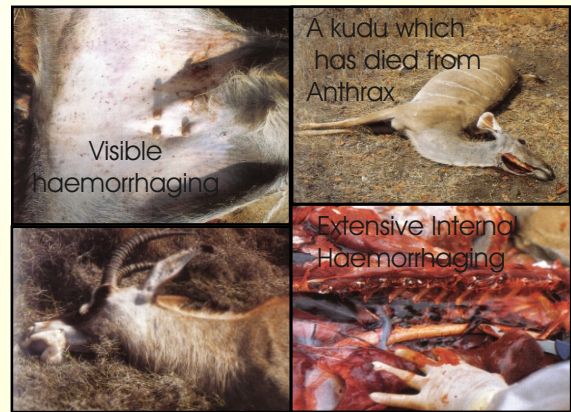
It is an acute and infectious disease caused by the spore forming bacteria *Bacillus anthracis*.

*Anthrax is a notifiable, Zoonotic disease and can be fatal to humans.*

## SYMPTOMS

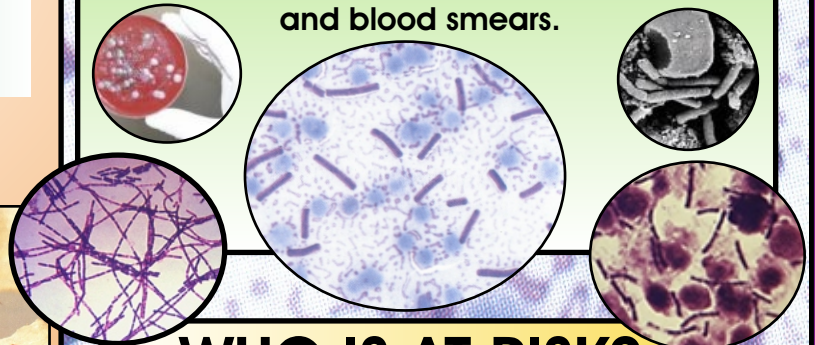
Infected animals usually die quickly from septicemia (blood poisoning). Widespread bleeding and swelling of the neck and throat are common signs of Anthrax.

The incubation period is 1-14 days and death occurs in 2-72 hours.



## DIAGNOSIS

A diagnosis is based on history, symptoms and blood smears.



## WHO IS AT RISK?

Anthrax affects almost all farm animals as well as game such as Kudu, Buffalo and Zebra. Humans can also become affected by inhaling the infected spores, by handling infected carcasses or eating undercooked meat.

**IF AN ANIMAL IS SUSPECTED OF HAVING DIED FROM ANTHRAX - THE CARCASS SHOULD NEVER BE OPENED. THIS WOULD RELEASE THOUSANDS OF HARDY SPORES INTO THE AREA AND POTENTIALLY BE THE CAUSE OF AN ANTHRAX OUTBREAK WHICH COULD PLACE MANY PEOPLE AT RISK!**

## PREVENTION AND CONTROL

Annual immunizations of all cattle from the age of 3-6 months. The anthrax vaccine is a live vaccine and must be administered at the same time as botulism and blackquarter. (NOT IN THE SAME SYRINGE). Animals must not be treated with penicillin, tetracycline or any other antibiotic 10 days before and after immunization as the vaccine will be neutralized.