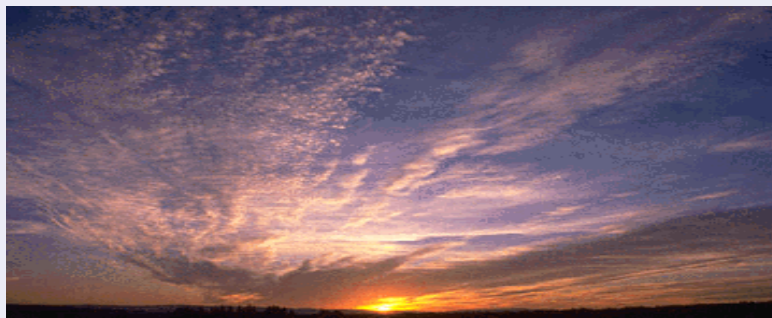




HEALTH
KwaZulu-Natal

RICHMOND
HOSPITAL 2008



INFORMATICS
BULLETIN

CONTENTS

VISSION & MISSION	3
FACILITY INFORMATION OFFICER'S COMMENT	4
INFORMATICS PERSONNEL	5
INFORMATION FLOW	6
THE F.I.O PROVIDES THE FOLLOWING INFORMATION.	7
STATISTICS, REPORTS AND DATA PERTAINING TO RICHMOND HOSPITAL	8-13
CONCLUSION	14
THE END	15

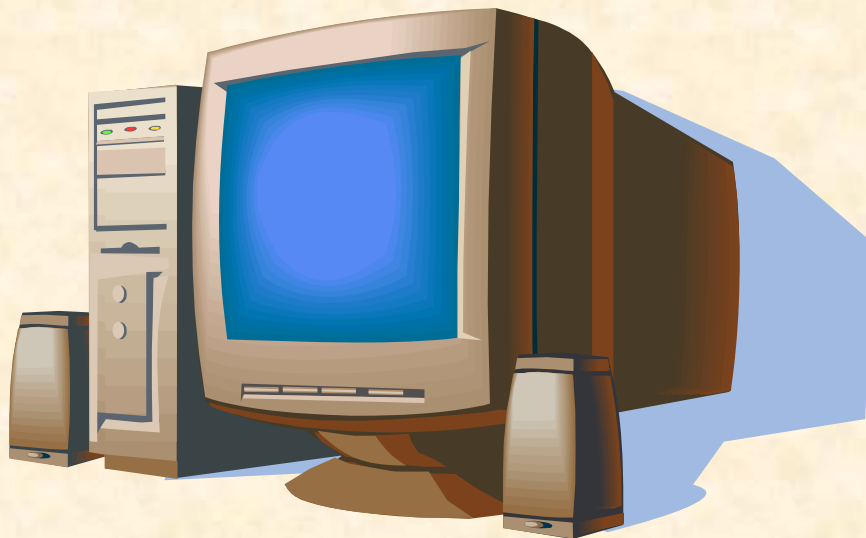
INFORMATICS DEPARTMENT:

VISION:

TO HARVEST AND PROVIDE A HOLISTIC OVERVIEW OF PERTINENT DATA THAT PROCESSES AND CULMINATES IN AN INFORMATION SYSTEM THAT IS SOUGHT AFTER AND UPON WHICH MANAGEMENT DECISIONS ARE MADE.

MISSION:

TO CREATE AN ENABLING ENVIROMENT TO IMPROVE AND SUPPORT THE HOSPITAL INFORMATION SYSTEM FOR EVALUATION AND SERVE THE NEEDS OF RICHMOND HOSPITAL.



FACILITY INFORMATION OFFICER'S COMMENT:

THE UTILISATION OF INFORMATION AS A MANAGEMENT TOOL HAS BEEN LARGELY ACCEPTED BY THE MANAGEMENT OF RICHMOND HOSPITAL. MONITORING THE TRENDS OVER THE PAST FEW MONTHS HAS ASSISTED IN PLANNING AT ALL LEVELS.

RICHMOND HOSPITAL HAS THEREFORE ESTABLISHED AN INFORMATION TASK TEAM TO ENSURE THAT DATA LEAVING THE HOSPITAL AT THE END OF EACH MONTH IS OF HIGH QUALITY.

IN THE PAST THE IMPORTANCE OF STATISTICS WAS UNDERESTIMATED NATION WIDE THUS LEAVING THESE SYSTEMS FRAGMENTED AND OVERLOOKED. WITH THE PARADIGMSHIFT AND EMPHASIS BEING PLACED ON INFORMATION WE ARE GRADUALLY MOVING TOWARDS AN INTEGRATED INFORMATION SYSTEM.

CONVERTING INFORMATION INTO KNOWLEDGE IDENTIFIES THE DEFICIENCIES AND EFFICIENCIES AND ALLOWS FOR IMPROVEMENT AND APPRAISAL THUS ALLOWING RICHMOND HOSPITAL TO FUNCTION MORE EFFICIENTLY AND OFFER BETTER SERVICE DELIVERY IN THE FUTURE.

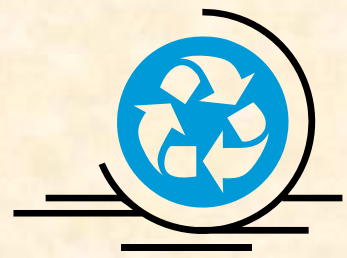


INFORMATICS PERSONNEL

MR. Sudheshan Pillay—Facility Information Officer



INFORMATION FLOW



WARD/ DEPARTMENT



SISTER IN CHARGE / DEPT. MANAGER



DATA CAPTURER



FACILITY INFORMATION OFFICER



PROVINCIAL INFORMATION OFFICER



NATIONAL



WORLD HEALTH ORGANISATION

THE F.I.O PROVIDES THE FOLLOWING INFORMATION/ DATA:

- * HIV/ AIDS DATA
- * TB PERFORMANCE INDICATORS
- * PHARMACY STATISTICS
- * LAB STATISTICS
- * SOCIAL WORK STATISTICS
- * IN-PATIENT INFORMATION
 - ADMISSIONS
 - DEATHS
 - DISCHARGES
 - ABSCONDMENTS
 - TRANSFERS
 - BED STATUS

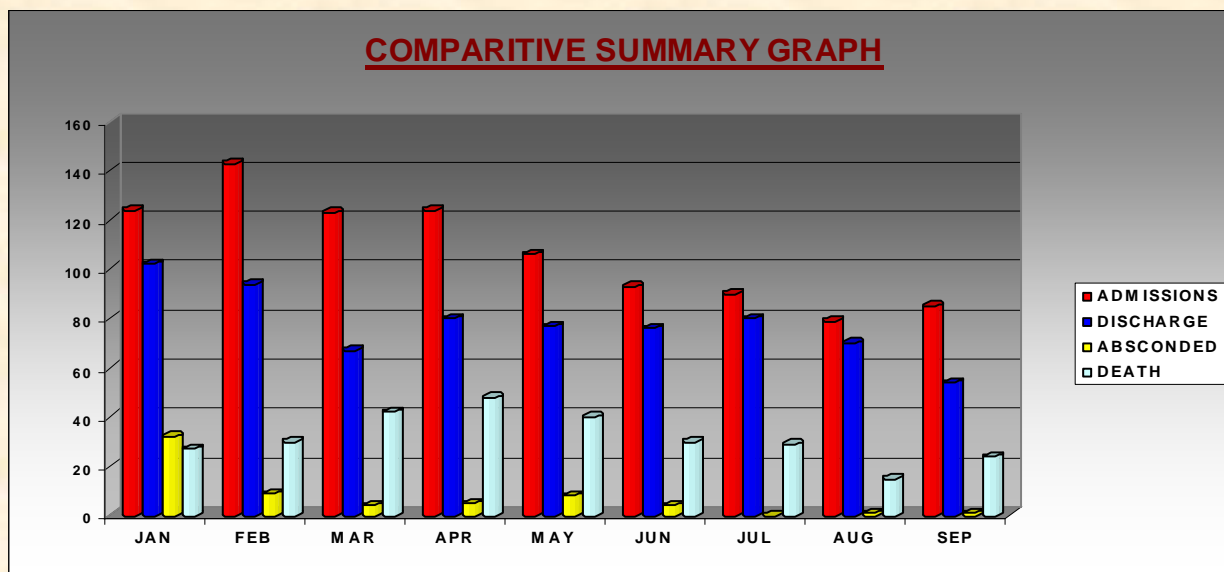
- * COMPILATION OF CLIENT SATISFACTION REPORTS
- * PROVISION OF SUMMARY AND COMPARITIVE REPORTS ON DATA PERTAINING TO RICHMOND HOSPITAL.
- * ANY INFORMATION REGARDING TO COMPUTER EQUIPMENT INCLUDING HARDWARE AND SOFTWARE



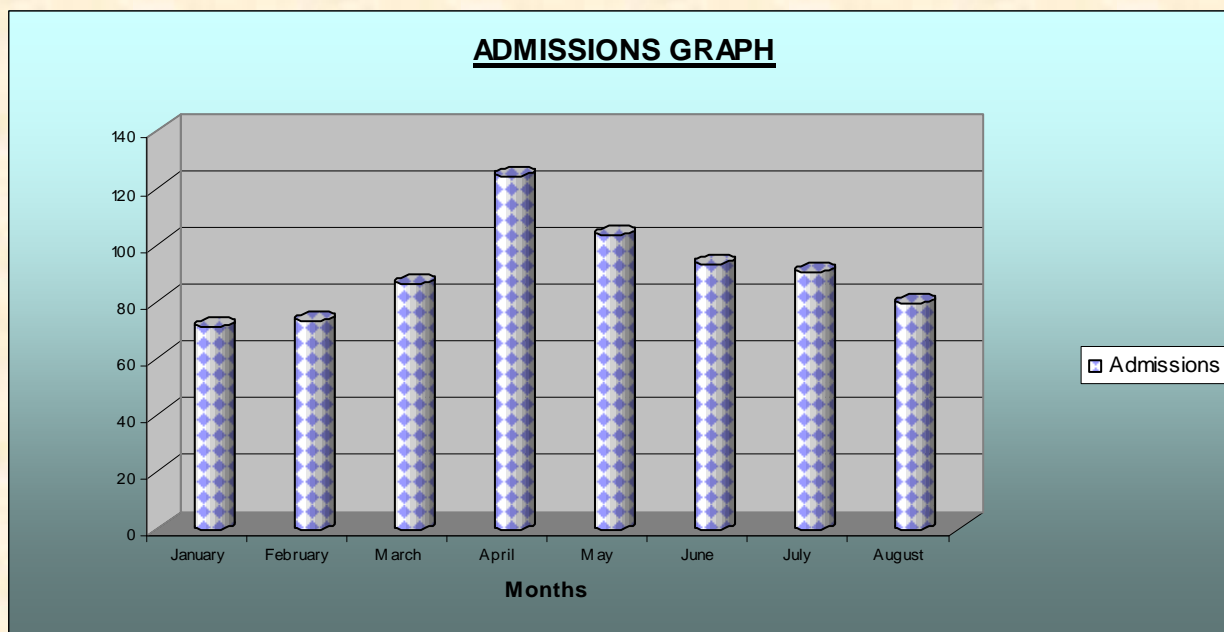
INPATIENT DATA:

ELEMENT	JAN	FEB	MAR	APR	MAY	JUN	JUL	AUG	SEP	OCT
ADMISSIONS	124	143	123	124	106	93	90	79	85	
DISCHARGE	102	94	67	80	77	76	80	70	54	
ABSCONDED	32	9	4	5	8	4	0	1	1	
DEATH	27	30	42	48	40	30	29	15	24	

Graph showing the number of Admissions, Discharges, Abscondments and Deaths for the year 2008

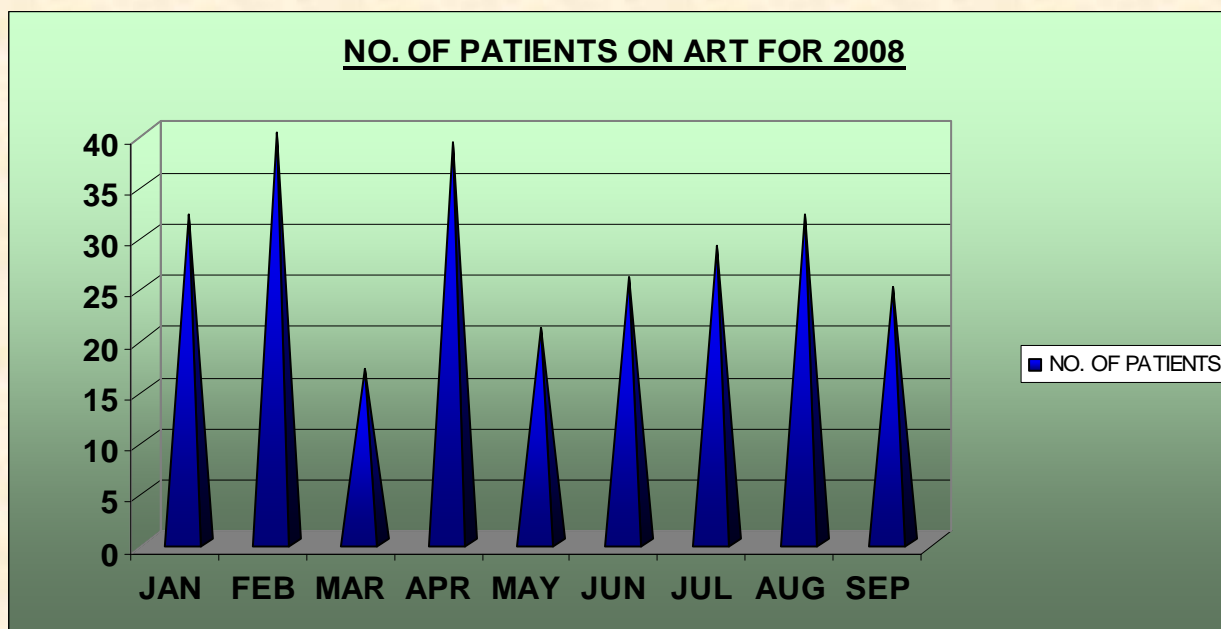


Graph showing the difference in the number of patients admitted for the first quarter of 2008.

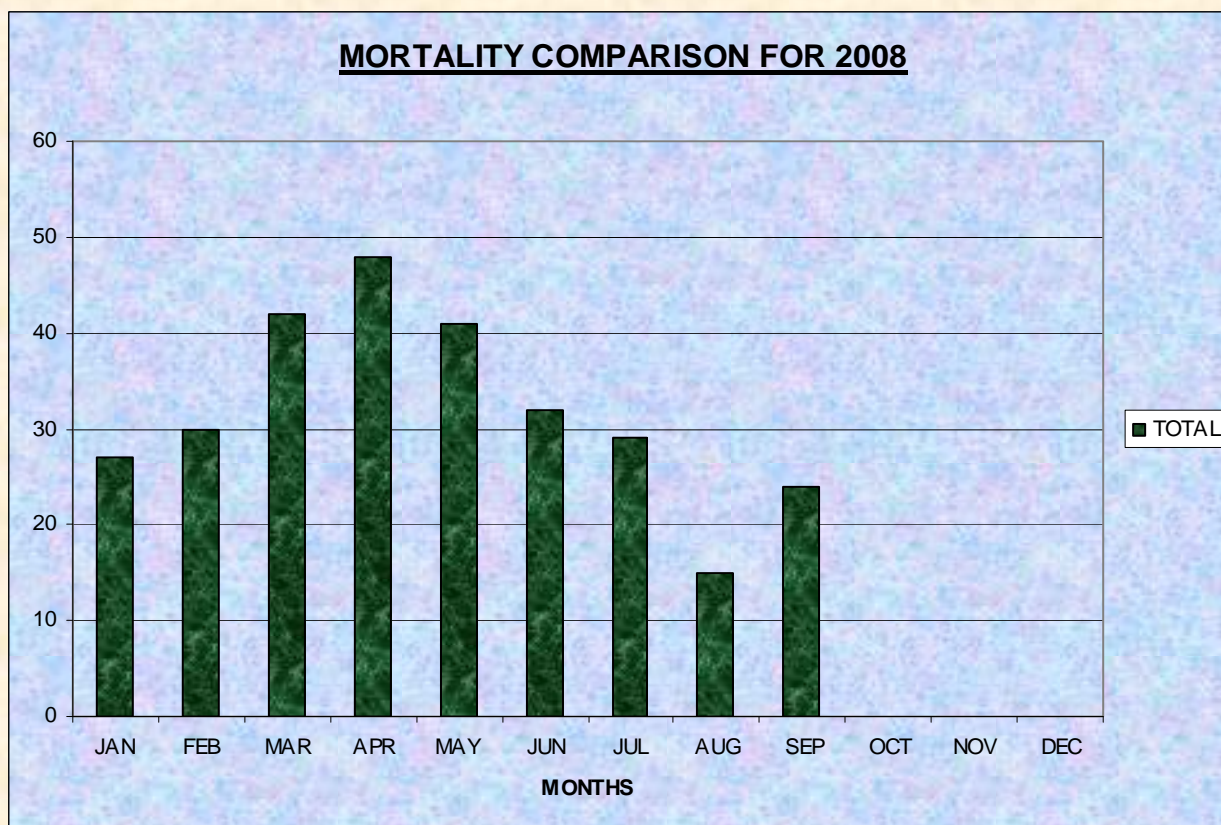


NUMBER OF PATIENTS ON ART FOR THE YEAR 2008									
	JAN	FEB	MAR	APR	MAY	JUN	JUL	AUG	SEP
NO. OF PATIENTS	32	40	17	39	21	26	29	32	25

Graph showing the number of patients on ART for 2008

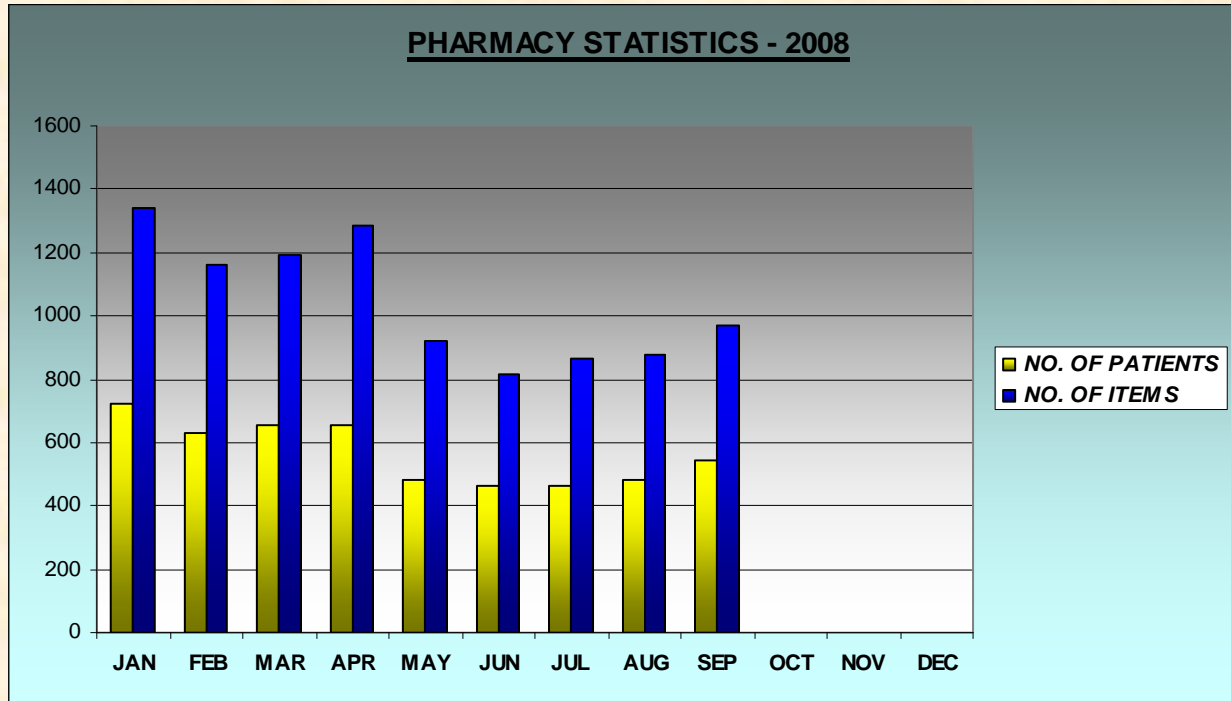


GRAPH SHOWING THE MONTHLY MORTALITY RATE FOR THE YEAR 2008



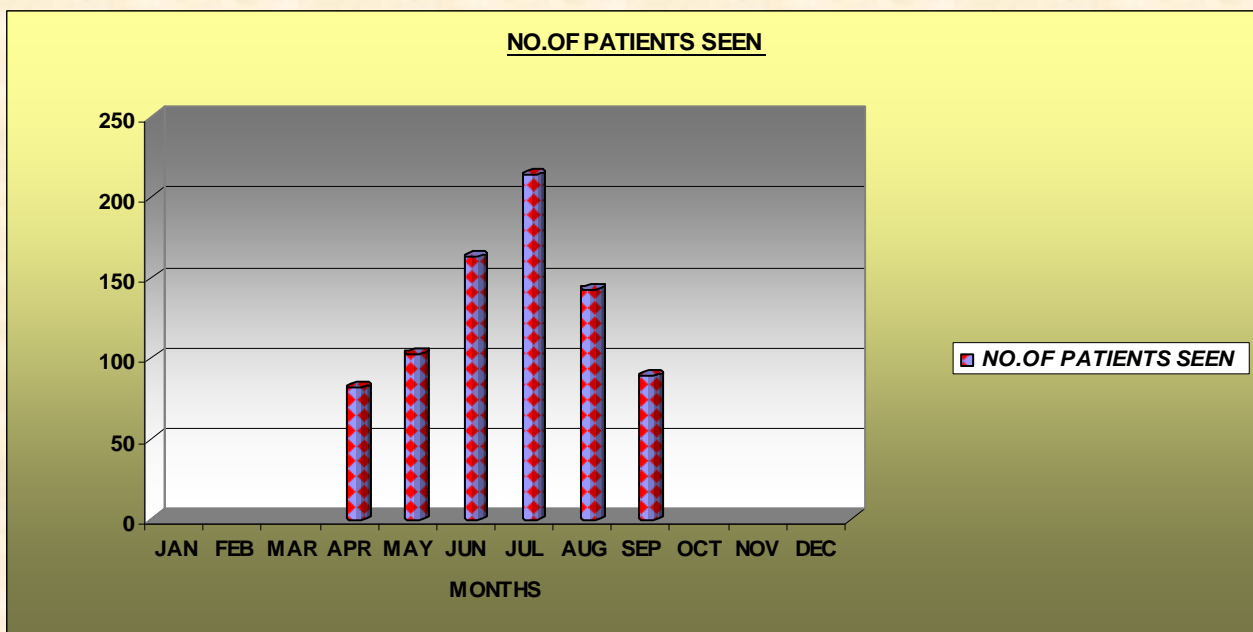
PHARMACY STATISTICS

Graph showing the number of items dispensed for the first quarter of 2008



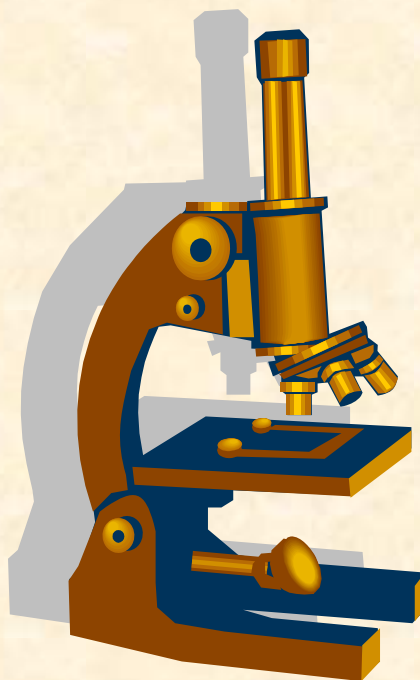
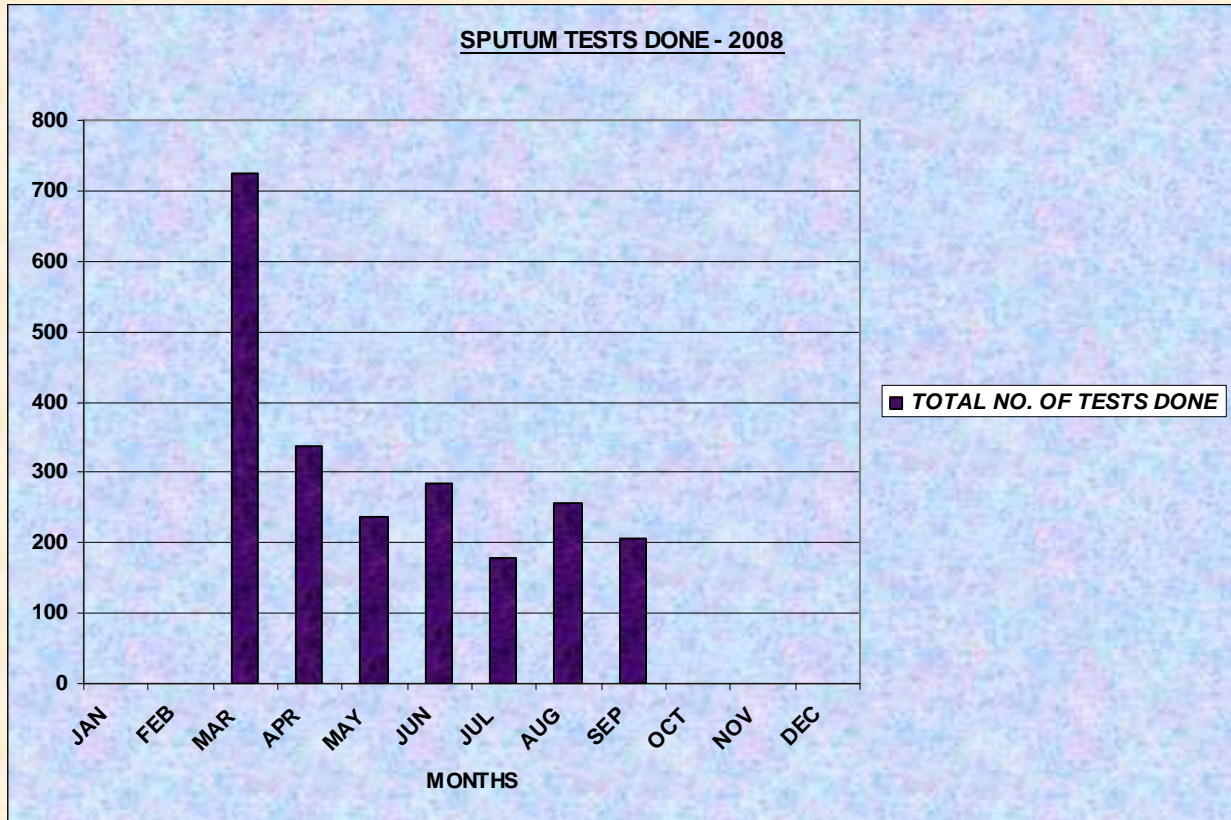
SOCIAL WORK STATISTICS

Graph showing the number of patients seen in the Social Work Department



LAB STATISTICS:

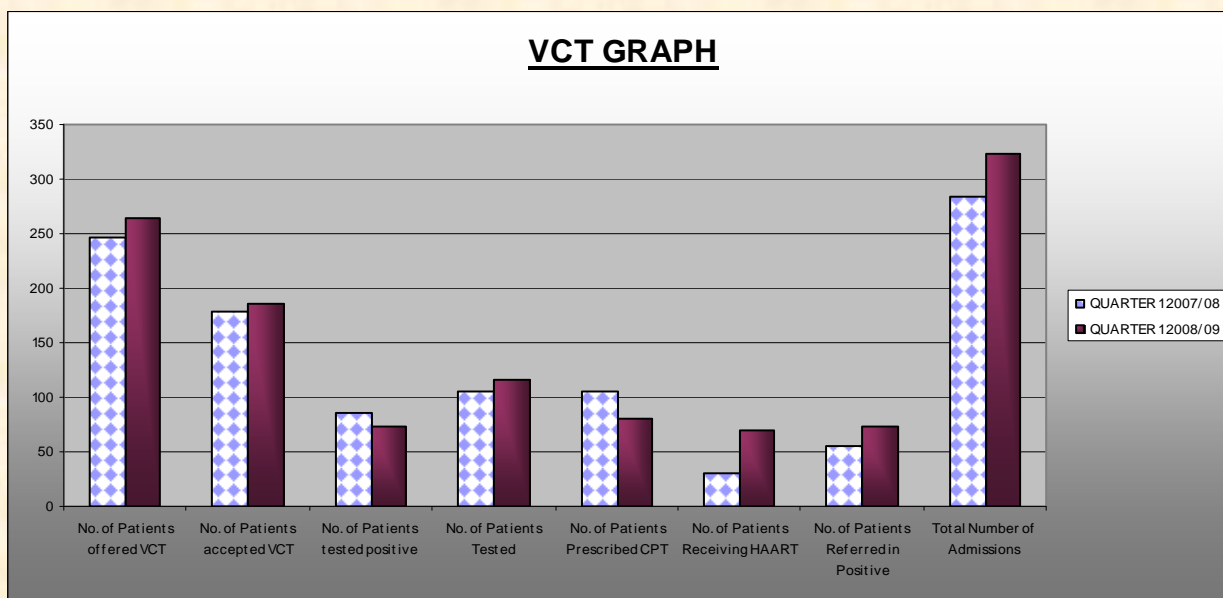
Graph showing the total number of sputum tests done at Richmond Hospital.



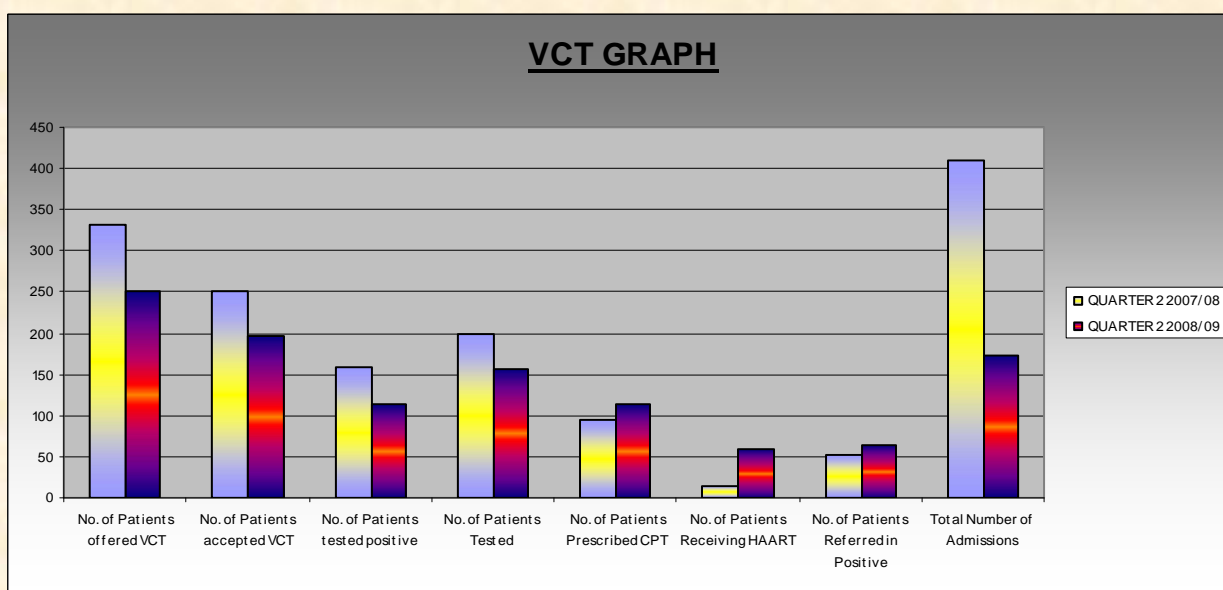
HIV/ AIDS INDICATORS: 2008/2009

Indicators	QUARTER 1	QUARTER 1	QUARTER 2	QUARTER 2
Newly Diagnosed TB Cases (New +Re-treatment cases)	2007/08	2008/09	2007/08	2008/09
No. of Patients offered VCT	246	264	332	251
No. of Patients accepted VCT	179	185	252	196
No. of Patients tested positive	86	73	158	114
No. of Patients Tested	105	116	199	157
No. of Patients Prescribed CPT	106	80	95	114
No. of Patients Receiving HAART	31	70	15	59
No. of Patients Referred in Positive	56	74	52	63
Total Number of Admissions	284	324	410	173

VCT GRAPH

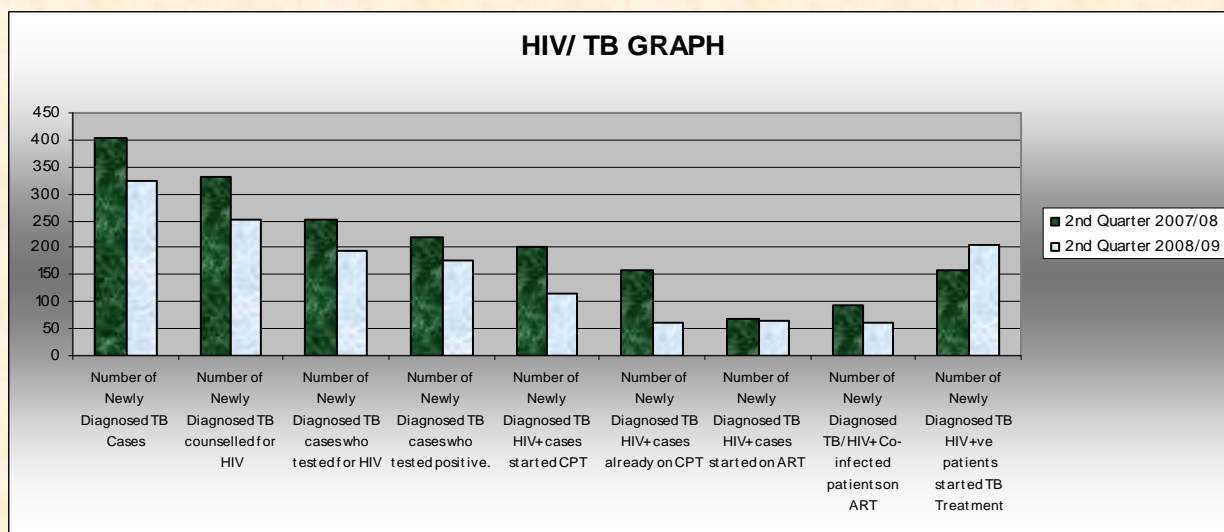
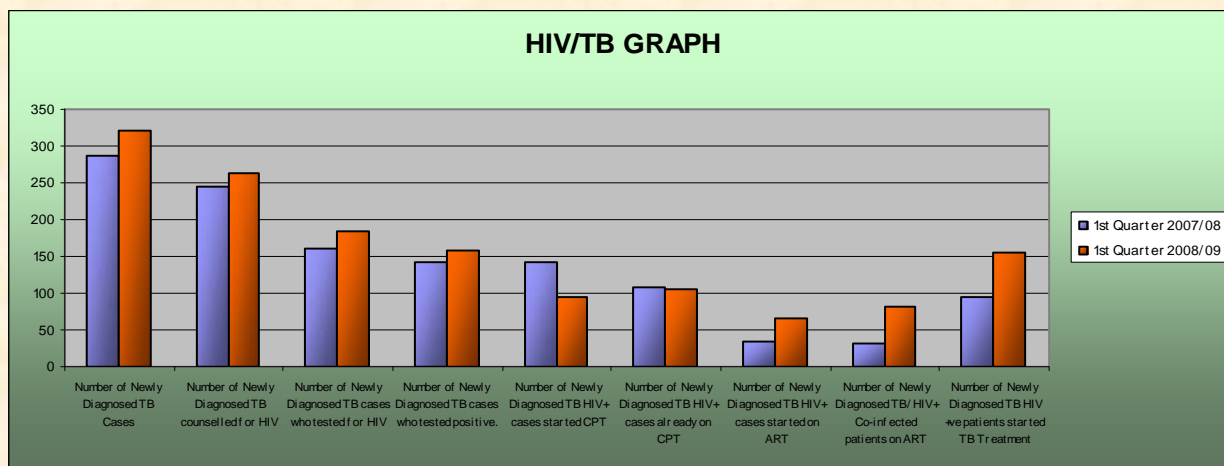


VCT GRAPH



TB/HIV REPORT: 2007/2008 AND 2008/200913

Indicators	1st Quarter		2nd Quarter	
	2007/08	2008/09	2007/08	2008/09
Newly Diagnosed TB Cases (New +Re-treatment cases)				
Number of Newly Diagnosed TB Cases	286	322	402	324
Number of Newly Diagnosed TB counselled for HIV	246	264	332	251
Number of Newly Diagnosed TB cases who tested for HIV	161	185	252	196
Number of Newly Diagnosed TB cases who tested positive.	142	158	221	177
Number of Newly Diagnosed TB HIV+ cases started CPT	142	95	200	114
Number of Newly Diagnosed TB HIV+ cases already on CPT	107	104	159	63
Number of Newly Diagnosed TB HIV+ cases started on ART	33	65	69	64
Number of Newly Diagnosed TB/HIV+ Co-infected patients on ART	32	81	95	61
Number of Newly Diagnosed TB HIV +ve patients started TB Treatment	96	155	159	204
TOTAL	1245	1429	1889	1454



CONCLUSION:

RICHMOND HOSPITAL STILL HAS A LONG WAY TO GO IN TERMS OF FUNCTIONING AT ITS OPTIMAL LEVEL AND PROVIDING THE BEST SERVICE DELIVERY FOR OUR PATIENTS IN THE KZN PROVINCE .

IN CONCLUSION I WOULD LIKE TO ADD THAT WITH GOOD MANAGEMENT AND A LOT OF HARD WORK I'M SURE RICHMOND HOSPITAL WILL EXCEL AT BEING THE BEST.



THATS ALL FOLKS

THE END

COMPILED BY: SUDHESHAN PILLAY
RICHMOND HOSPITAL
TEL.: 033—212 2170
E-MAIL: sudheshan.pillay@kznhealth.gov.za