

# Essential Newborn Care 2

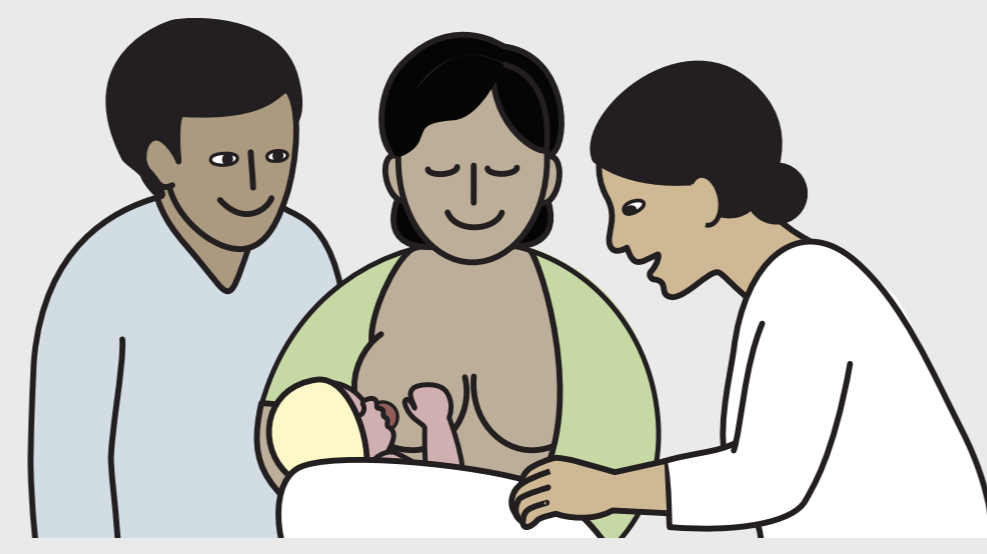
## Assessment and Continuing Care



60 min

90 min

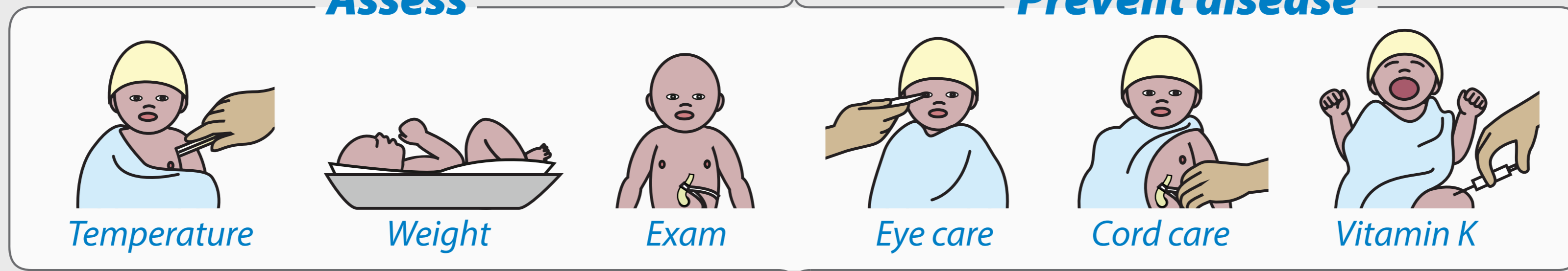
Record and use data – Provide respectful care – Prevent infection



Identify risk factors

Assess

Prevent disease



If at any time  
**DANGER SIGN**  
immediately  
give antibiotics  
and seek advanced care

CLASSIFY

**ROUTINE**

Weight  $\geq 2500g$   
Temp  $36.5 - 37.5^\circ C$   
Feeding well. Normal exam



Maintain normal temperature



Support breastfeeding

Advise about breast feeding problems

Reassess for discharge



Immunize  
Advise about home care

**INTERMEDIATE**

Weight  $1500 - <2500g$ , Temp  $<36.5^\circ C$   
Feeding difficulty. Risk of infection



Maintain skin-to-skin  
Support breastfeeding  
Treat risk of infection

REASSESS

Low weight or low temperature



Provide continuous skin-to-skin

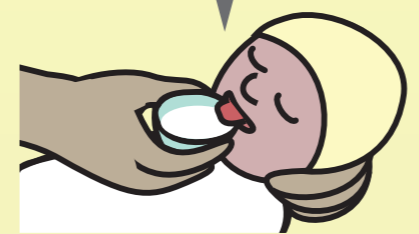


Improve thermal care

Feeding difficulty



Express breast milk



Feed with cup or tube



Transition to exclusive breastfeeding

REASSESS

Improved

Prepare for discharge

Low weight



Immunize  
Advise about home care and community support

**ADVANCED**

**DANGER SIGNS**  
Breathing  $>60$   
Chest indrawing  
Temp  $<35.5^\circ C$  or  $>38^\circ C$   
Not feeding  
No movement  
Convulsions

Weight  $<1500g$   
Severe malformation  
Birth injury



Give antibiotics



Stabilize for referral as needed